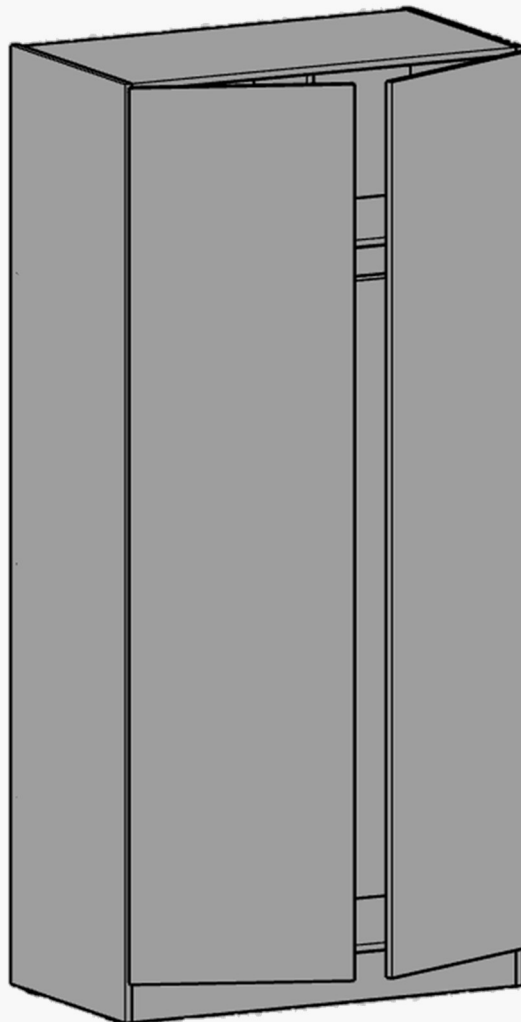




DIY Fitted Bedrooms INSTRUCTION MANUAL



www.diyfittedbedrooms.co.uk

Before starting, sort components into relevant units Build one unit at a time

Please use these instructions in conjunction with our fitting videos
located on our website:

www.diyfittedbedrooms.co.uk

Technical Department: Matt or Sam 01425 541414

Table of Contents

DIY Fitted Bedrooms INSTRUCTION MANUAL	1
Fixings.....	3
Tools.....	4
WARNINGS.....	5
Labels.....	6
Panel Preparation.....	7
Assembly	10
Interiors.....	14
Hanging Rail / Shelf with Downstand.....	14
Partition	15
Internal Chest.....	15
Shelves	16
Secure the robe to a wall.....	16
Doors	17
Door Adjustment	19
Corner Robe.....	20
Return.....	20
Top View	20
Stable Corner Robe	20
Top View.....	Error! Bookmark not defined.
Bridging Unit	22
Drawers	23
Under Drawer Box.....	23
Kneehole.....	23

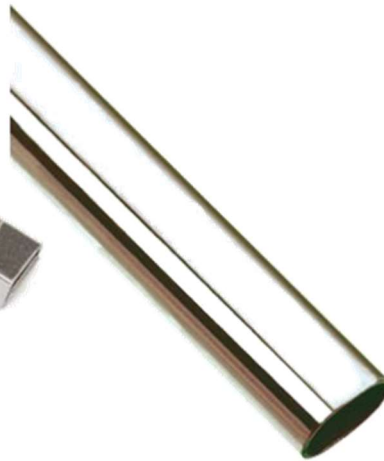
Fixings



Hinge Plate



Hinge



Hanging Rail



Hanging Rail
Bracket



'L' Shaped Bracket



Adjustable Feet



Cover Caps



5mm PIN



Euro Screw



30mm Screw



15mm Screw

Tools



Cross Head Screwdriver



Hammer



Tape Measure



Spirit Level



Drill

WARNINGS

- Use the 'L' shaped brackets provided to affix units over 1 meter tall to walls. This ensures stability and safety

You will need to provide the appropriate rawl plug / plasterboard fixing for attaching to the wall.

- Use caution when using power tools

- Always lift responsibly

We recommend all delivered packages are lifted with two people.

Labels

Each component of furniture will have an identifying sticker with the following information

Part Name	
Width (mm)	Height (mm)
Order ID	
<div>Part Picture</div>	Row Number
Robe Width (mm)	Robe Name

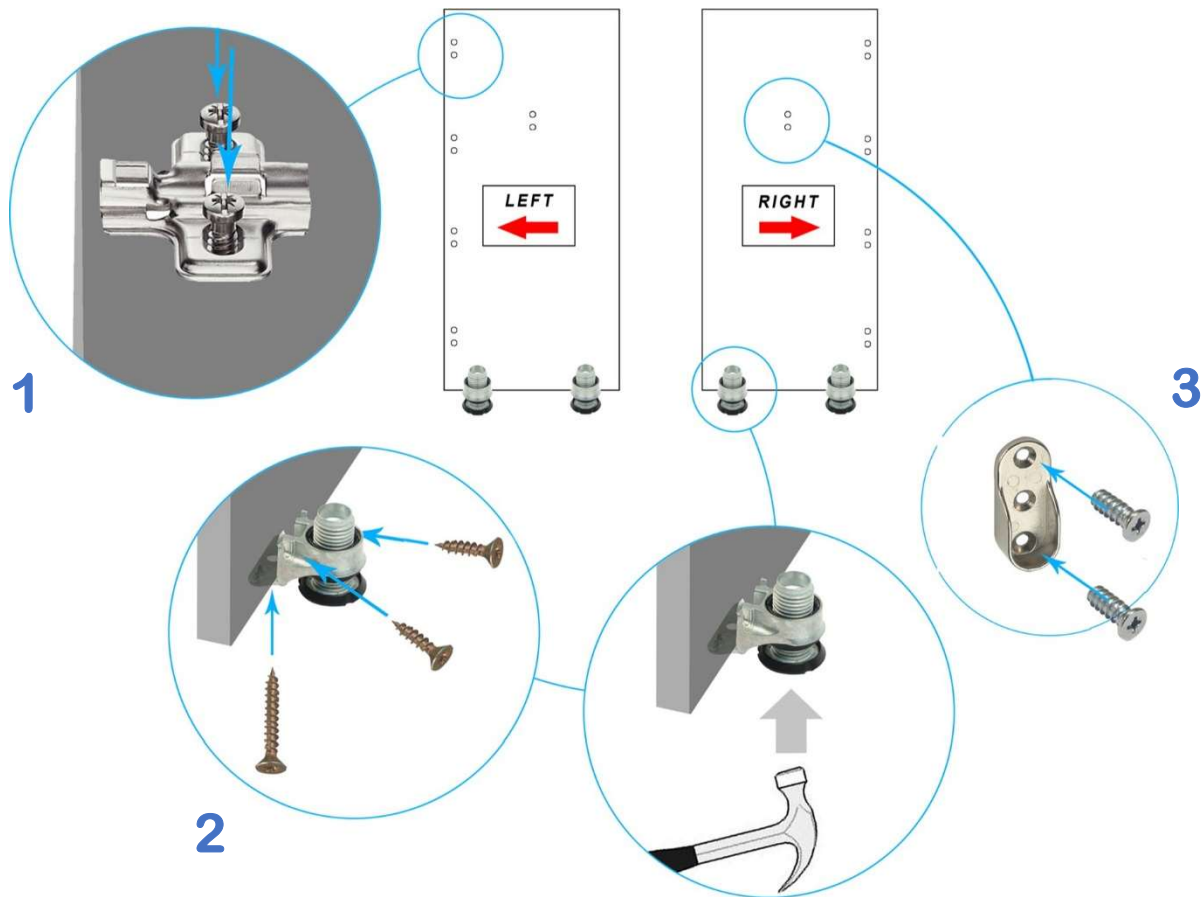
The “Row Number” on the label will correspond to the row on your order. We recommend sorting parts according to this number, as they will be assembled to create one unit.

If your order contains more than one unit per row then those units will share the same row number, as they do on your order confirmation email.

Panel Preparation

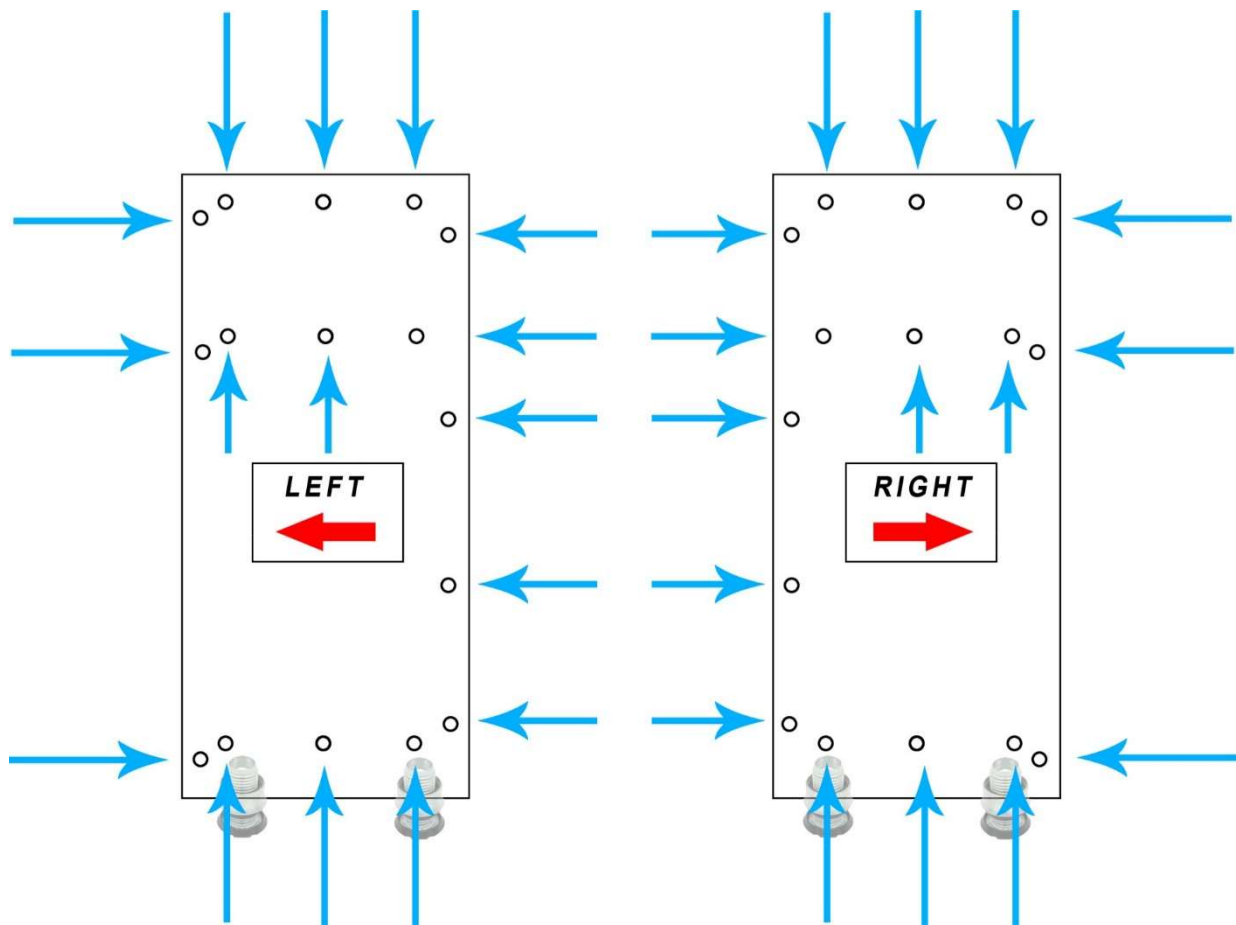
Side Panels

Lay the two wardrobe panels flat on a clean surface. The side with the label and holes should be facing up.



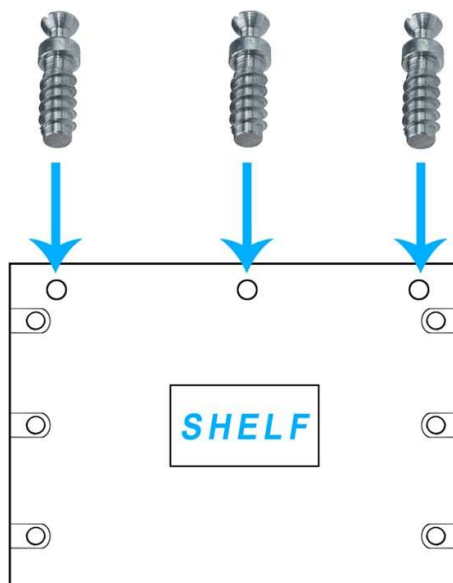
- 1** Fix 4x Hinge Plates to the 4 pairs of holes running down the side of each door
NOTE: Fix Hinge Plate with square cut out facing inwards towards centre of the door.
DO NOT fully tighten - Leave loose as this will help when attaching the doors later.
- 2** Place Adjustable Legs by sliding them up onto the bottom of the door. With a hammer tap the legs firmly into position.
Fix legs into position with 2 x 15mm screws in sides and 1 x 30mm screw underneath.
- 3** Fix Hanging Rail Bracket(s) using Euro screws

- 4** Screw 5mm Pins into all the remaining holes around edge of both door panels, ensuring all are firmly screwed in with flange flush to panel.



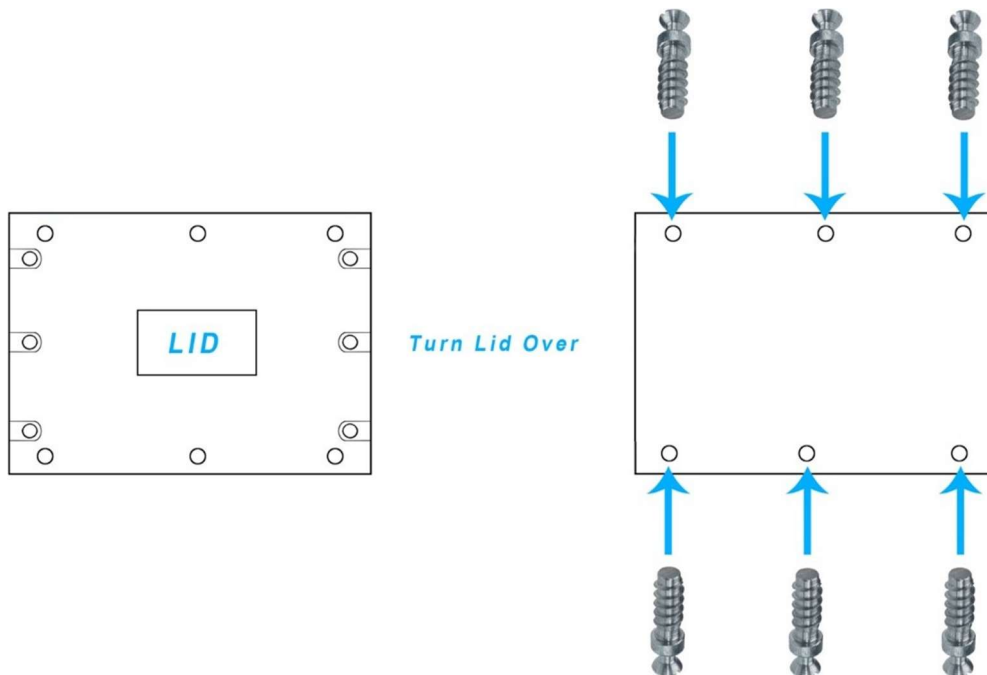
Shelf Panels

- 5** Screw 3 x 5mm pins into the holes at the front of the shelf panel.



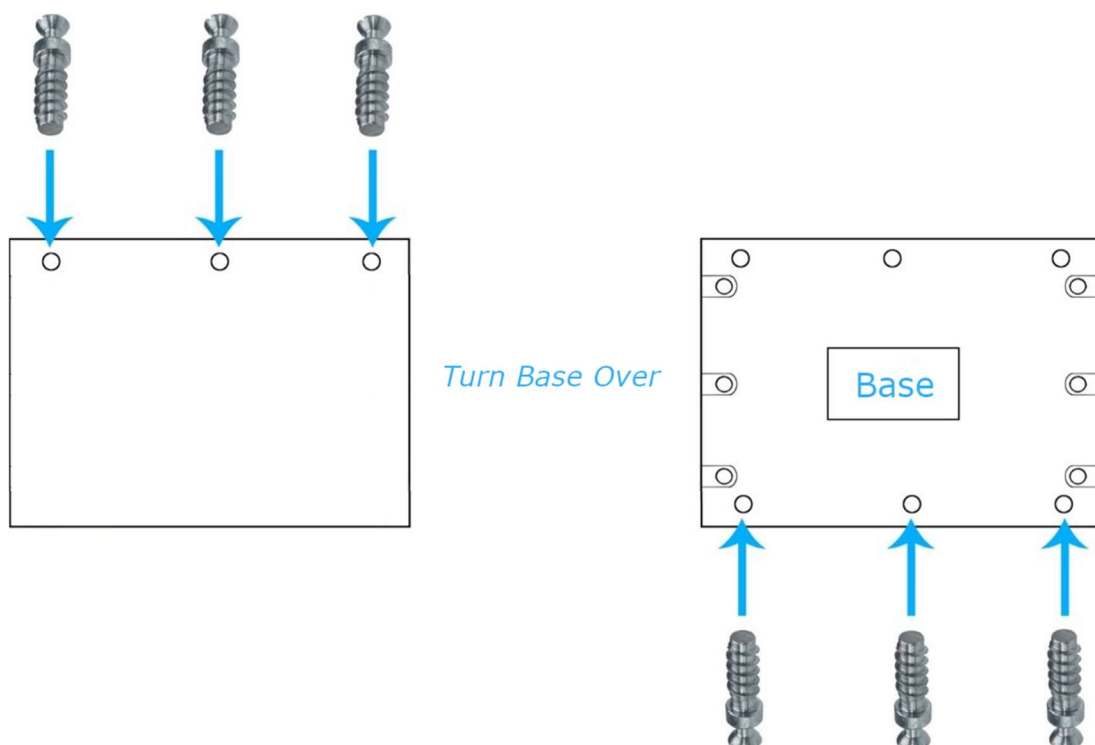
Lid Panels

- 6** Screw the two rows of 3 x 5mm pins into the holes on the opposite side of the board to the sticker and cams.



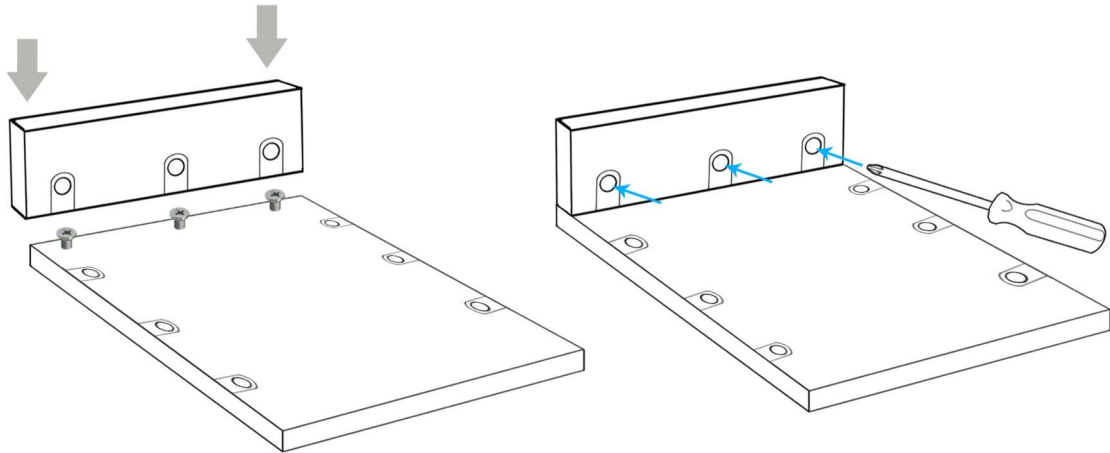
Base Panels

- 7** Screw one row of 3 x 5mm pins into the panel on the opposite side to the sticker and cams. Then screw the other row in the side with the sticker and cams. *NOTE: This should result in a panel with one row of pins on each side of the board.*



Assembly

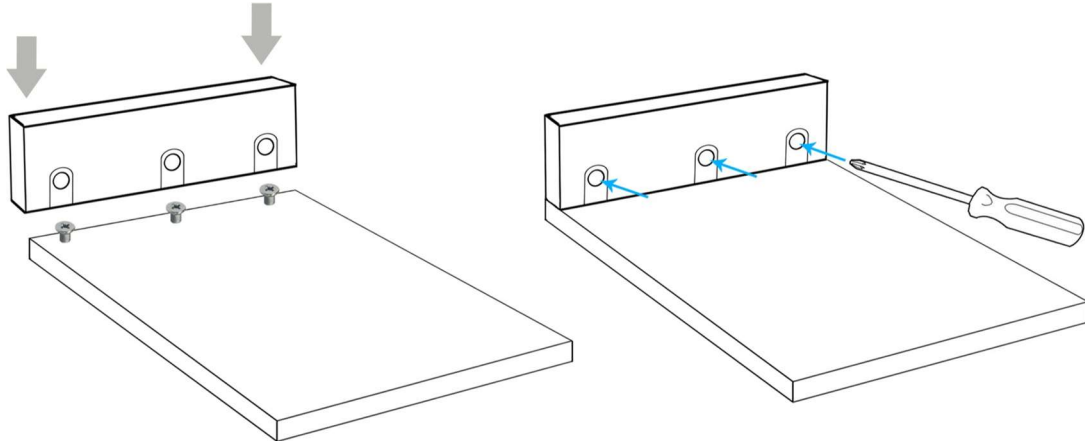
BASE PANEL



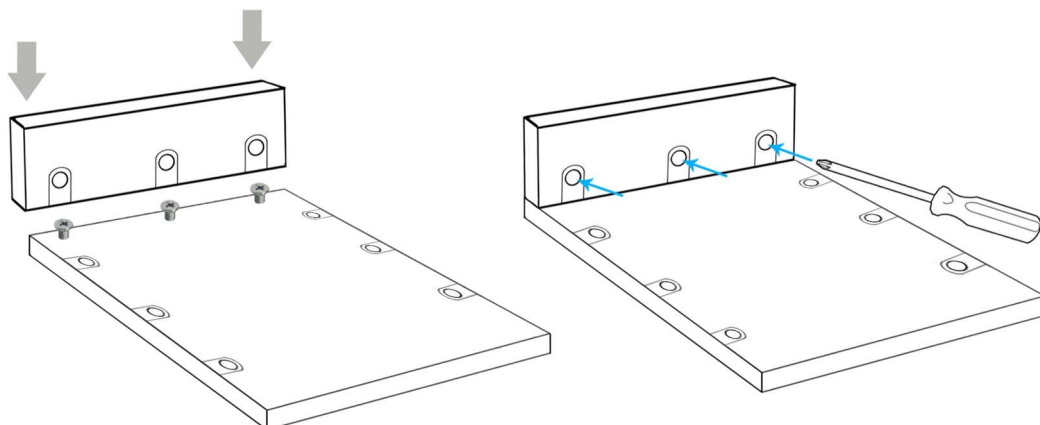
- 8** Turn the base so the sticker and cams are face up. Then slot the plinth onto 5mm pins of the base panel. Fix the join by tightening the cams with a screwdriver.

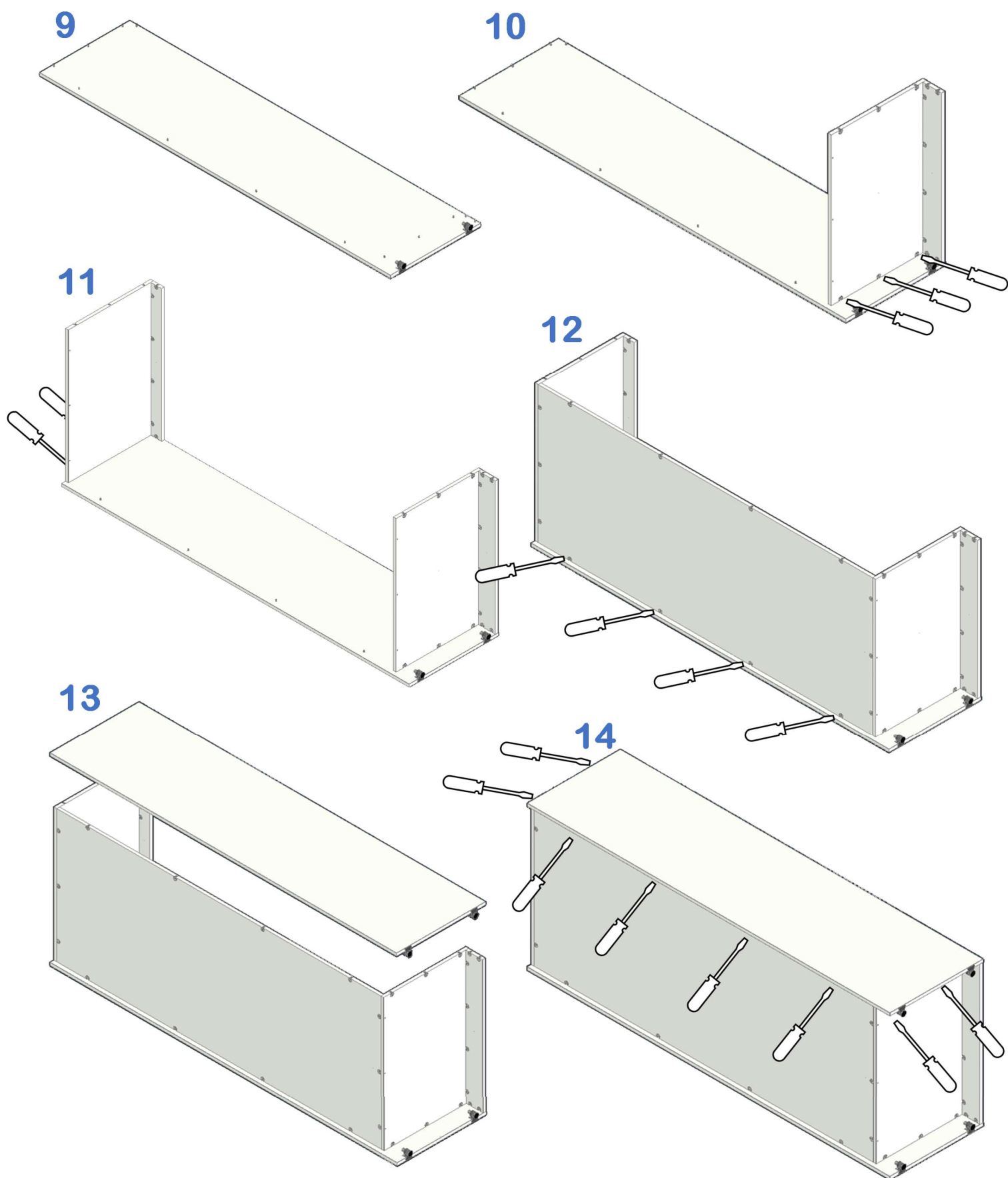
Repeat for the lid and shelf panel.

Lid Panel



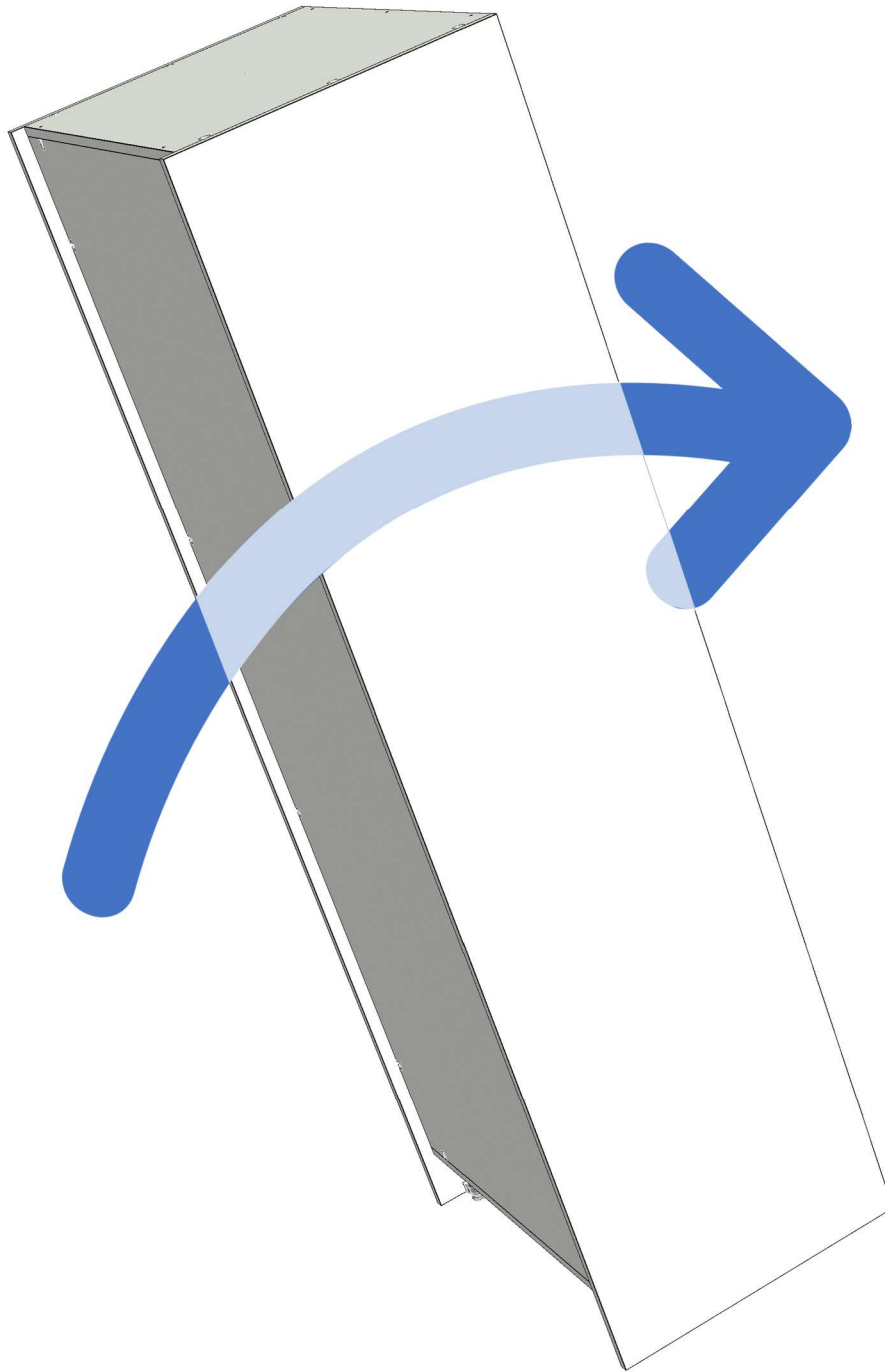
Shelf Panel





- 9** Begin construction of the wardrobe by laying one of the side panels on a clean floor.
- 10** Fix the base panel to the side panel by placing it over the 5mm pins with the plinth and cams both facing down away from the centre of the side panel.
- 11** Fix the top panel to the side panel the same way. Placing it over the pins with the downstand facing down (into the wardrobe) and with the cams facing up, away from the centre of the side panel.
- 12** Take the back panel and slot it over the 5mm pins along the long edge of the side panel. The pack panel should sit within the pins of the lid, base and side panel with the cams facing out to the back of the wardrobe.
- 13** Slot the other side panel over the top of the assembly ensuring all the pins line up with the cams in the base back and lid panels.
- 14** Tighten the cams to secure the second side panel into position. Then ensure all the cams are now tightened.

IMPORTANT NOTE: The Cams on the back panel should be facing the wall and not visible on the inside. Lid cams should be facing the ceiling and base cams the floor. **No cams should be visible from the inside of the robe.**



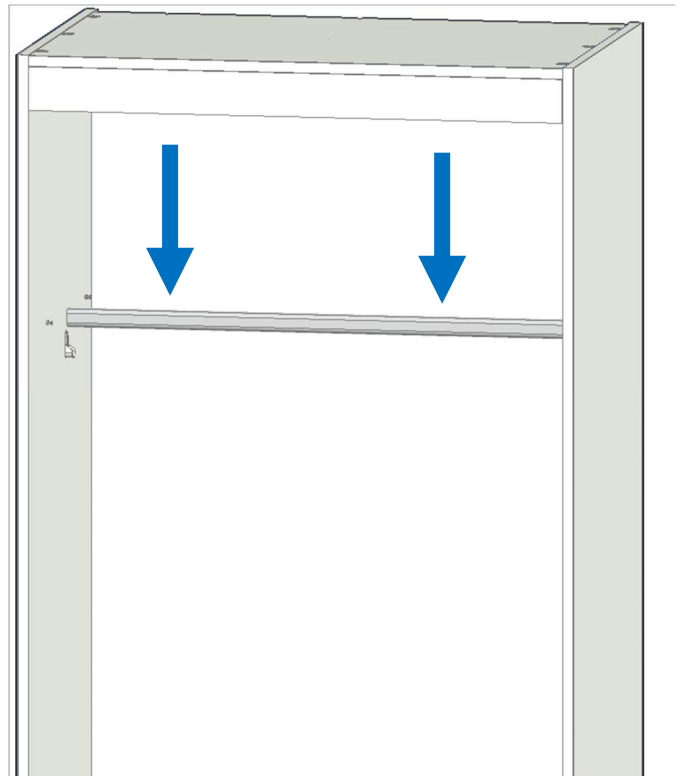
15 Carefully stand the wardrobe carcass upright. Then move the robe to its final position. Use a spirit level to ensure the wardrobe is level, both horizontally and vertically. You can adjust the level using the robe foot adjustment screws, accessed through the holes in the robe base.

16 Once the wardrobe is level, cover the adjustment holes with cover caps.

Interiors

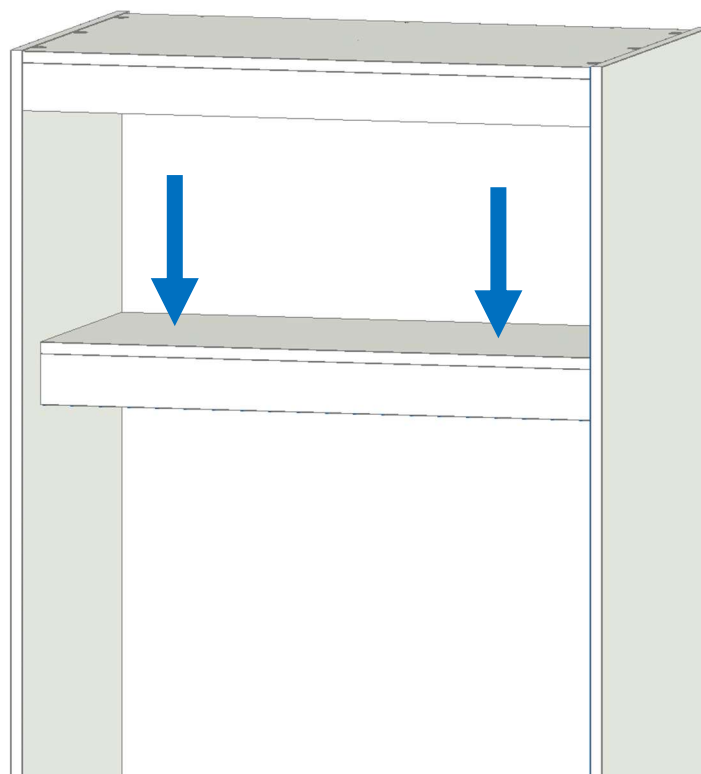
Hanging Rail / Shelf with Downstand

17 Use euro screws to affix the hanging rail brackets to the side panels. Then slot the pre-cut hanging rail into the brackets.



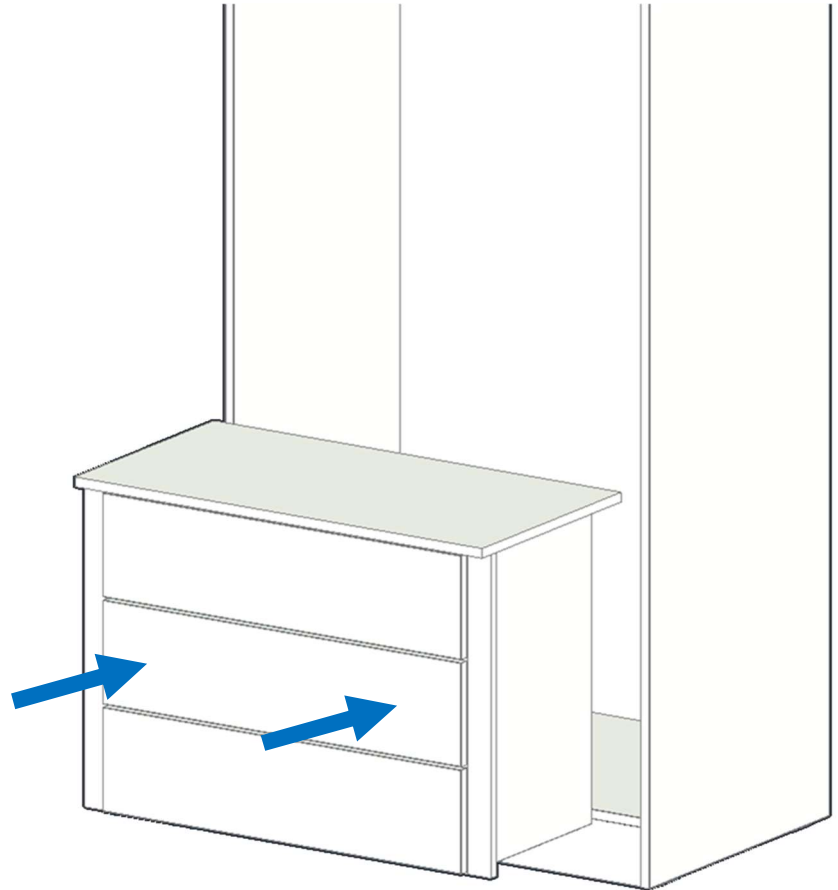
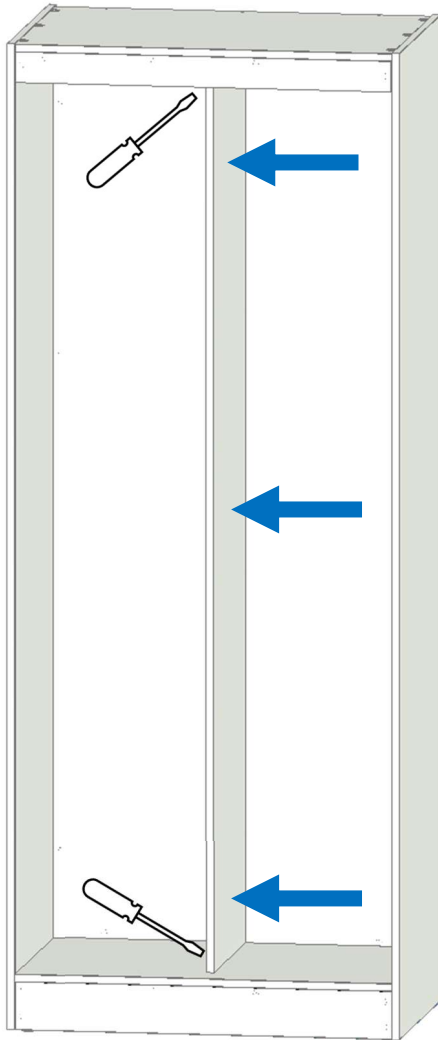
18 Take the shelf assembly and slot it over the 5mm pins above the hanging rail with the cams facing down and shelf downstand obscuring the hanging rail from the front.

19 Tighten the cams to fix the shelf panel into position.



Partition

20 Slide the partition into place between the pins at the top and bottom, ensuring the drillings for the rest of the interior elements match their opposing side panels. Then tighten the cams to hold the panel upright.



Internal Chest

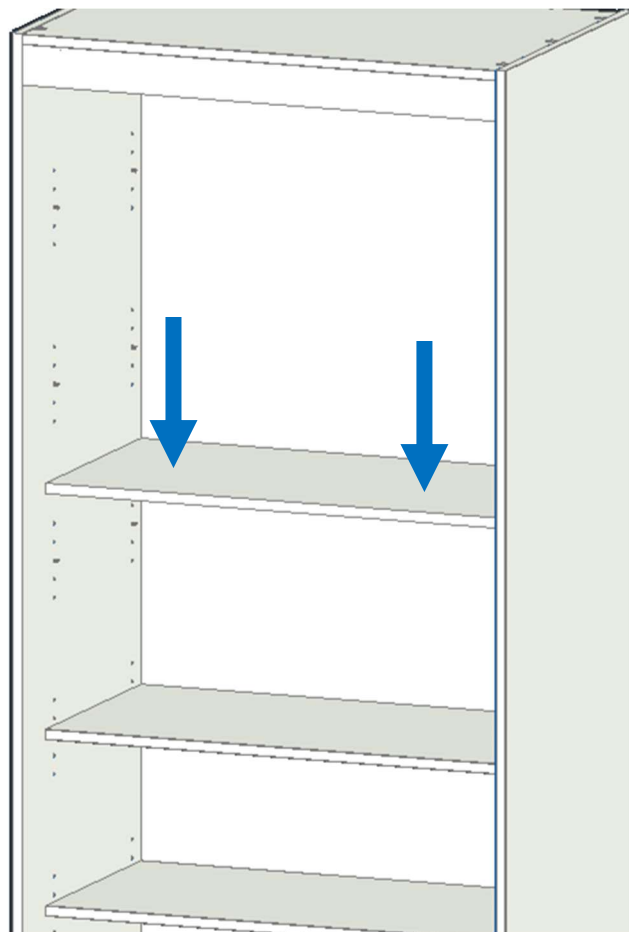
21 Remove the transportation feet from the bottom of the preassembled drawer unit.

22 Screw 5mm pins into the holes on the sides on the drawer unit. Then place the drawer chest scribes over the 5mm pins and tighten the cams.

23 Drop the internal drawer chest into the robe and push it to the back. Remove the bottom drawers (see page 21). Then screw down through the base into the robe floor to hold the chest in place, and up through the top rails into the worktop to hold it down.

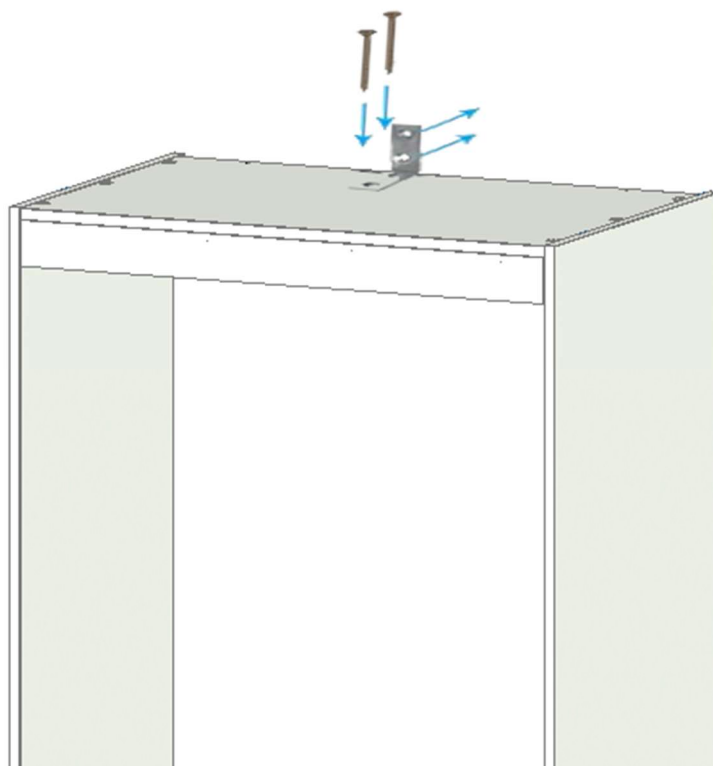
Shelves

24 Push 4 adjustable shelf pins into the holes that correspond to the four corners of the shelf, at a height of your choice. Then place the shelf onto those pins.



Secure the robe to a wall

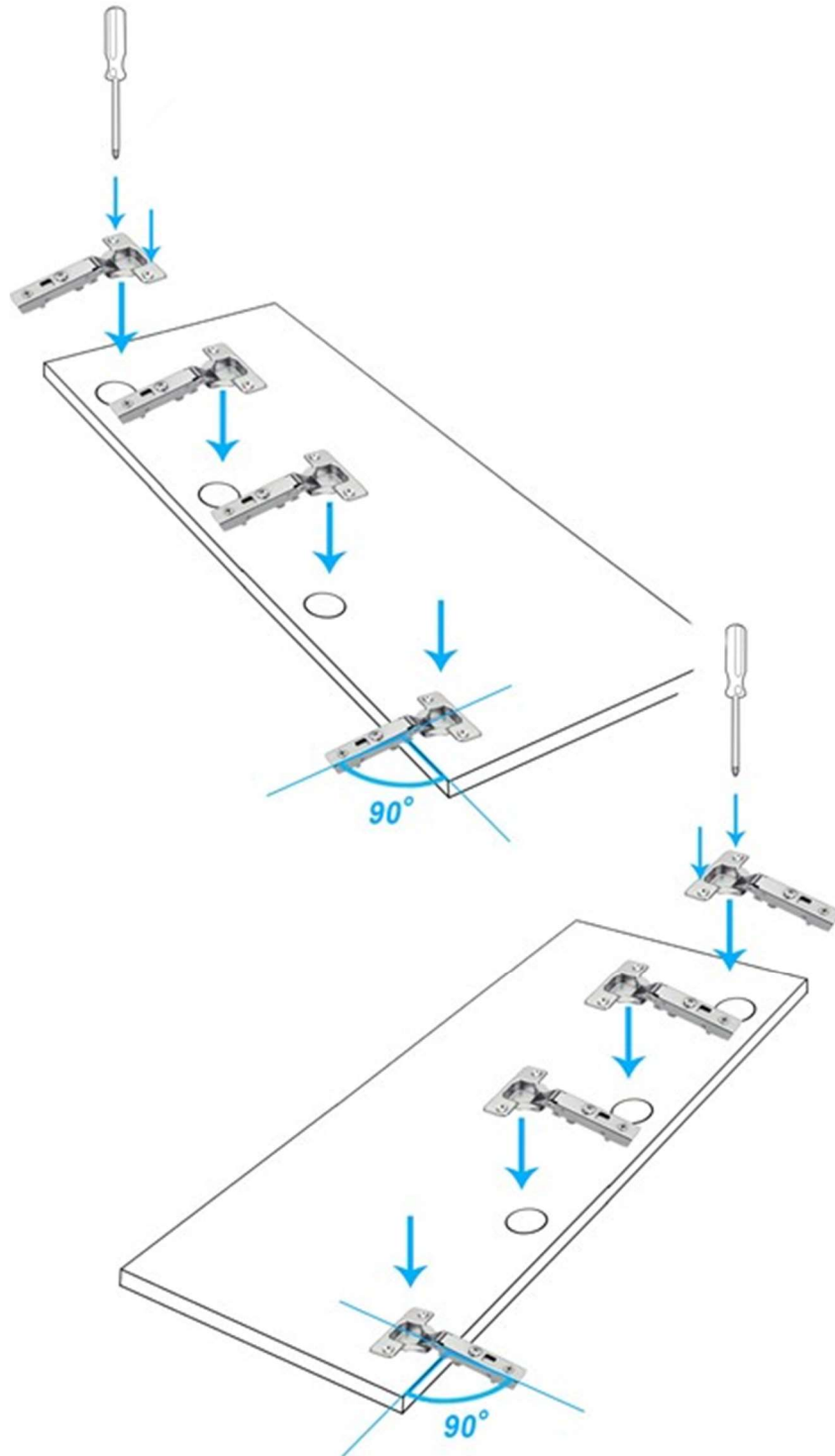
25 Using the 'L' shaped bracket, secure wardrobe to the wall at the top.



Doors

26 Lay the robe doors on a clean surface with the label facing up. Then place 4 hinges in each door at exactly 90 degrees to the edge of the door.

Fix the hinges in position with 16mm screws

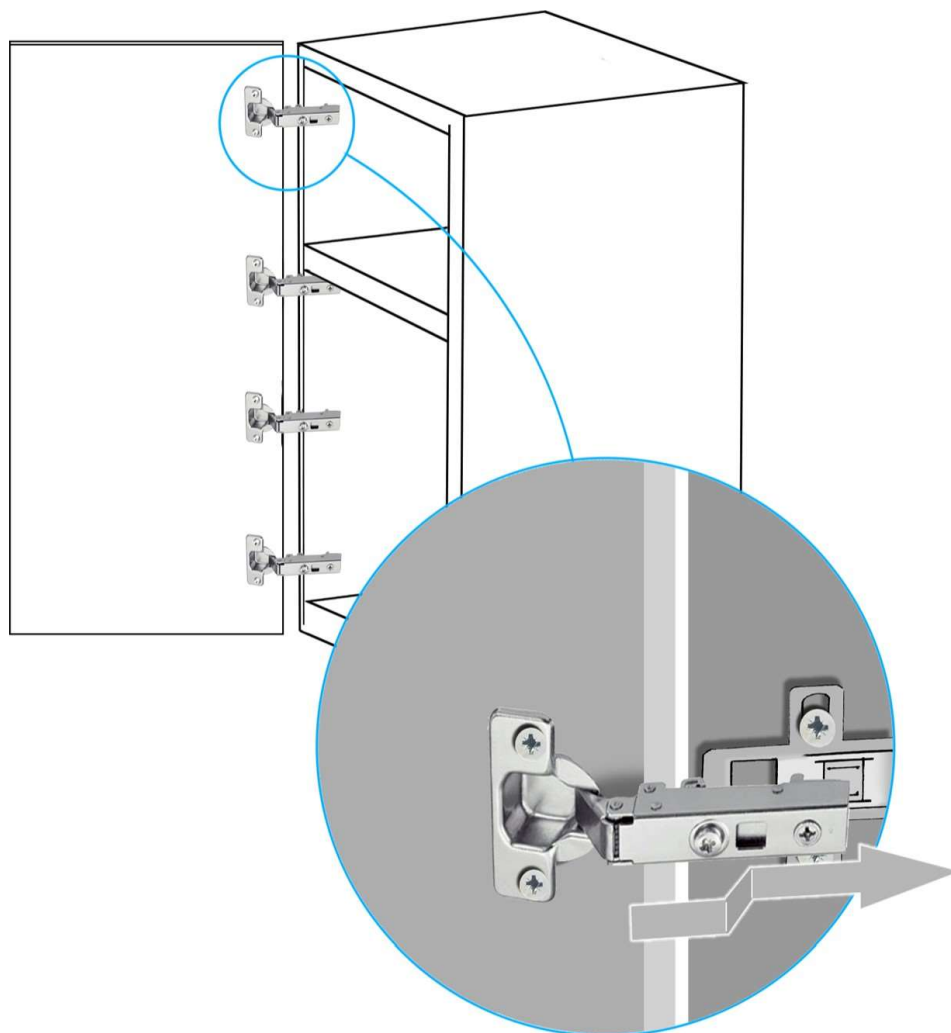


27 Fix the robe door to the carcass by clipping hinges into the loosened hinge plates. Line up the hooks at the front of the hinge, then press firmly at the back of the hinge. You should hear an audible click when they are secure.

Close the door and check that it lines up with the top of the wardrobe.

Once lined up, tighten the hinge plates.

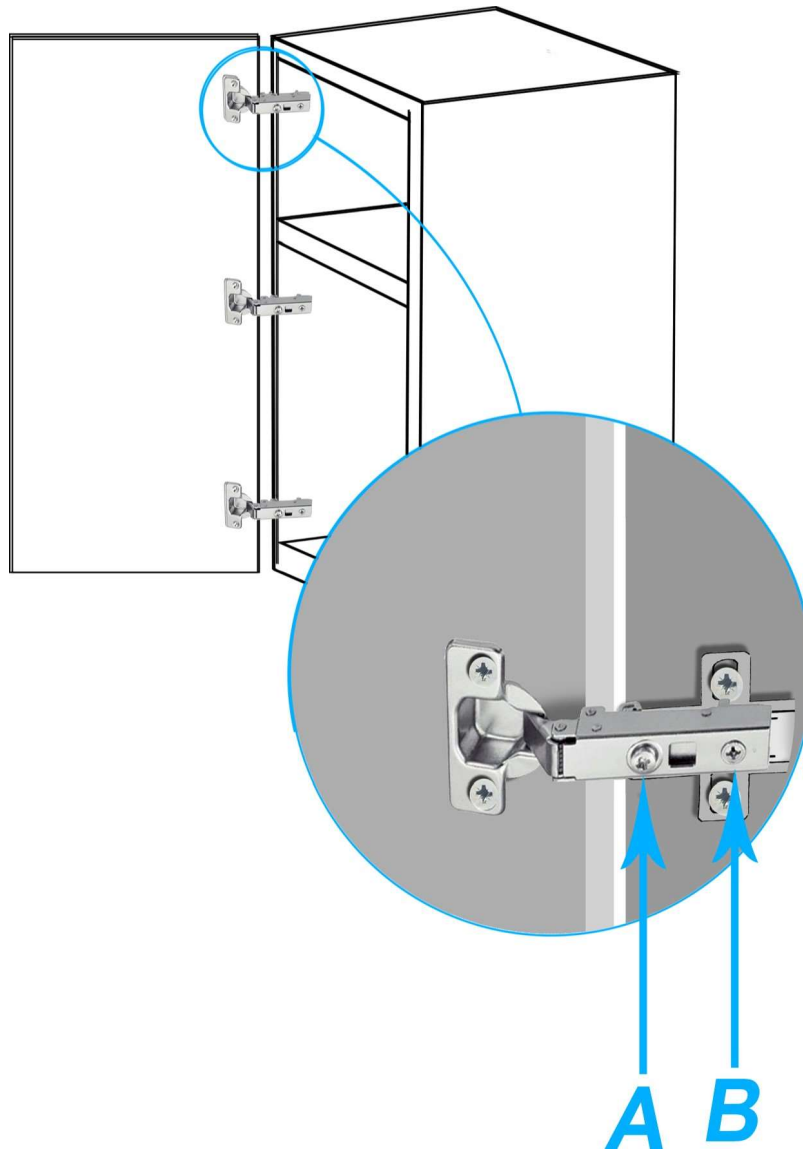
Repeat for any other doors.



Door Adjustment

The hinges have screws that allow for the doors position to be adjusted

For best results, try and balance any adjustments across all the hinges of each door



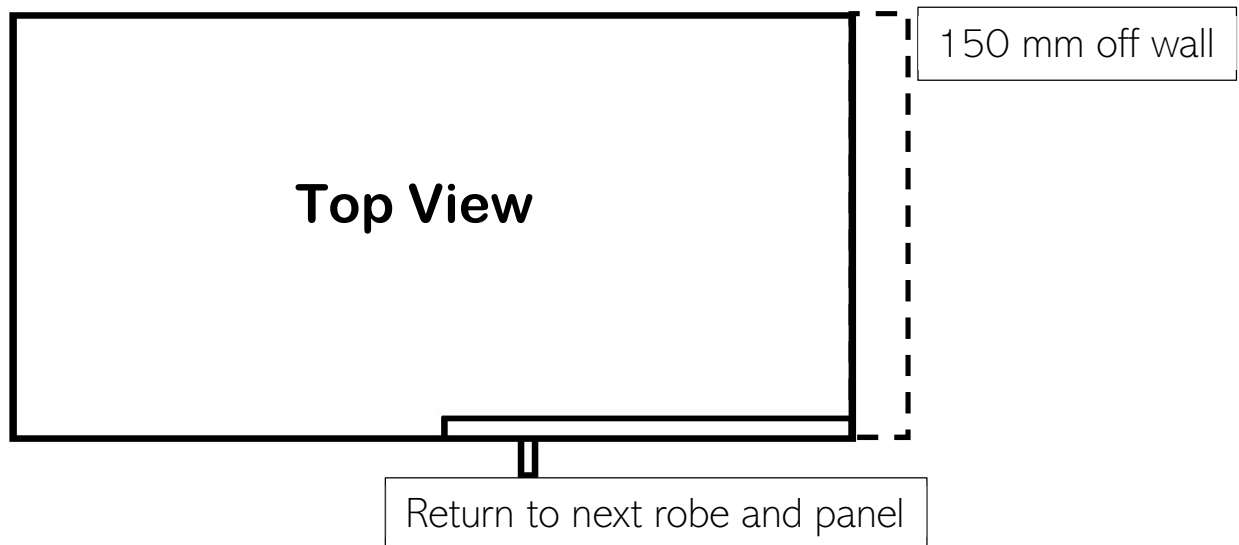
A Tightening will push the door towards the centre of the robe, use this screw to narrow the gap between the doors. If the doors conflict, then loosening this will increase the gap between them.

B Tightening will decrease the gap between the door and the end panel, and loosening will increase it. Adjusting this can help if the door does not close all the way.

NOTE: We recommend a 3mm gap between a closed door and wardrobe carcass to prevent rubbing when the doors open and close.

Corner Robe

A full height panel sits within the robe with the cams facing inside.



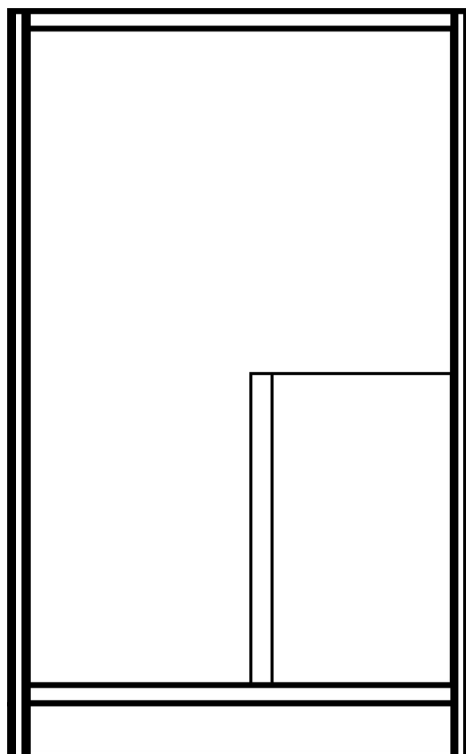
Return

With the panel in place add the 5mm pins to the front and attach the return section.

Stable Corner Robe

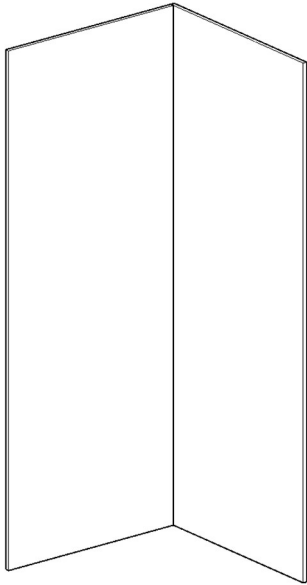
Build this as a standard double robe. Then add the stable door panel within the robe, with the cams facing inside.

After, add the 5mm pins to the front and attach the return section.



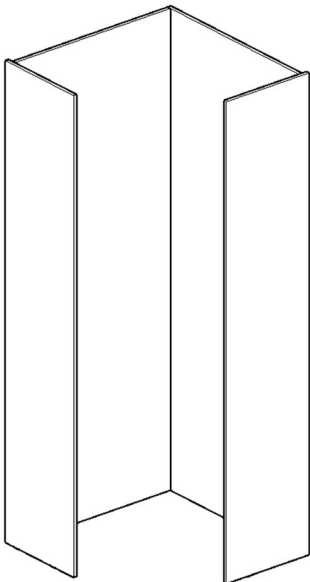
Diagonal Corner Robe

A



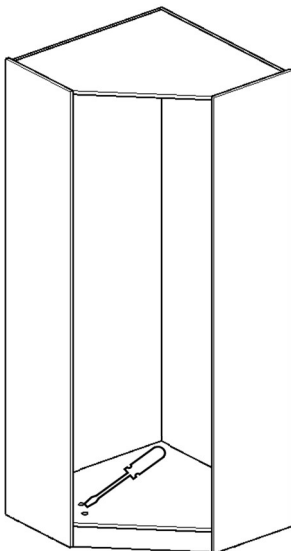
Assemble standing upright with the 2 back panels.

B



Attach the two side panels.

C



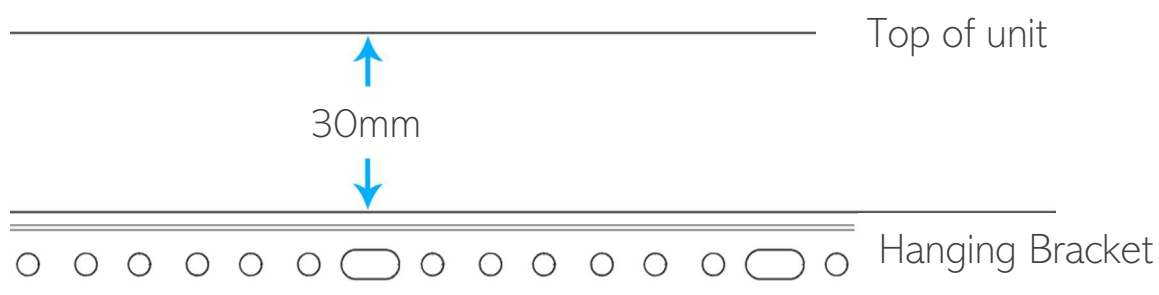
Attach the base and lid and tighten cams from the inside.

Use the access holes created in base and lid panels to tighten up.

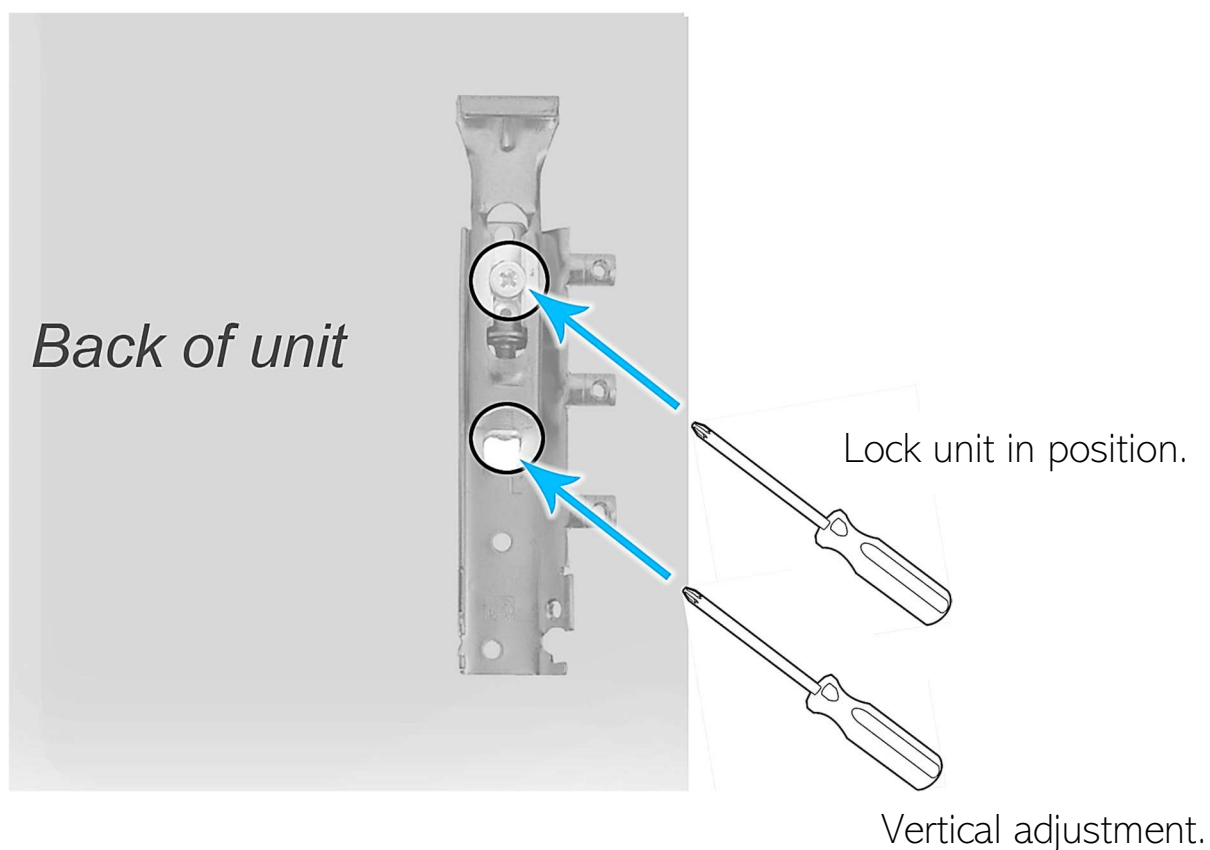
Bridging Unit

Bridging units arrive pre-assembled. To hang these on the wall:

Mount the hanging bracket on the wall 30mm down from where you want the top of the bridging unit.

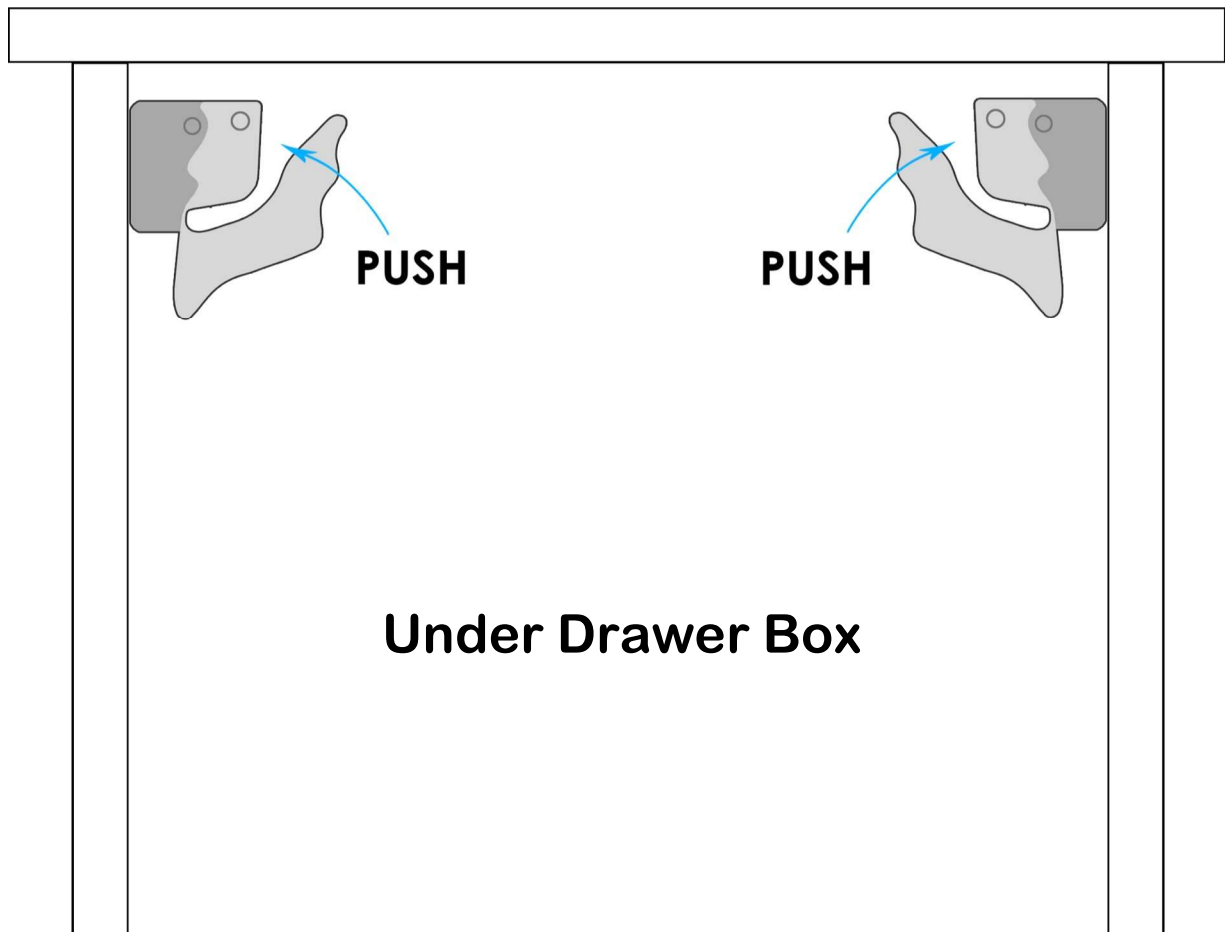


Slot the hanging bracket (pre-installed on the back of the unit) onto the wall mounted bracket. Once secure, adjust the bridging unit position via the adjustment screws on the hanging brackets.



Drawers

To remove draws from a unit, pull the drawer out to its full extension, reach under the front of the drawer, and squeeze the levers on either side. This will disengage the drawer runners and allow you to pull the drawer box out.



Kneehole

The kneehole is a preassembled unit.

To secure it to adjoining units, remove the drawer. Then hold the unit in its final position and use 30mm screws through the side panels to fix it to adjoining units. Finally cover the screws with cover caps.

**Thank you from the whole team at
diyfittedbedrooms.co.uk**



We hope you love your new DIY Fitted Bedroom!

If you have any issues with assembly of our units don't hesitate to contact us:

**01425 541414
sales@diyfittedbedrooms.co.uk**

Once you're happy with your furniture we would love to hear from
you.

